



# Steering Practical lesson

## Getting around things

When you have mastered the basics of moving off and initial clutch control you need to be able to steer the car. In order to steer the car effectively it will help if you understand the importance of the link between observation and steering.

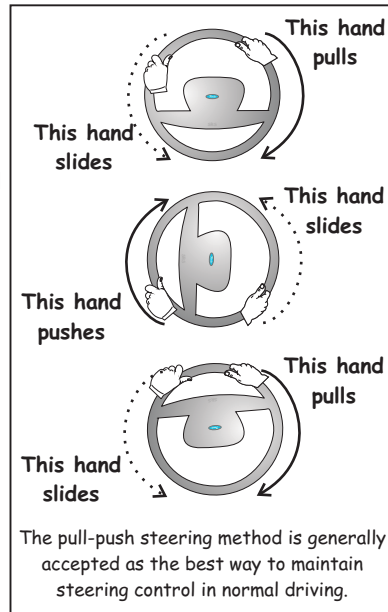
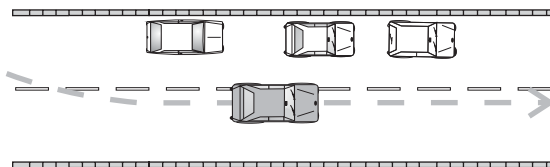
In order to steer effectively, your eyes need to send the correct information to your brain so that it can send the appropriate commands to your arms and hands. Bearing this in mind, **the first rule of steering is: look at what you want to hit!** This isn't as silly as it sounds. What it means is: if you want to hit the gaps between obstructions you look at the gaps.

As a pedestrian you will be used to looking about five metres (five yards) ahead. This is fine when walking around at two or three miles per hour. However, when driving a car you are going much faster than this. At 30 mph (walking speed x 15) you will need to look much further ahead. **The second rule of steering is: look well ahead.**

Because there are things happening all round when you are driving (and the scene can change quickly) you need to keep your eyes moving. This is similar to watching a film from the front row of a wide screen cinema. If you don't move your eyes you won't get the big picture. **So the third rule is: keep your eyes moving.**

If you apply the steering rules above you will always follow a safety line (the imaginary line plotting the path of your vehicle ahead). Finally, you must decide where the car is going well before you get there!

Look well ahead to follow an imaginary safety line that will keep you at least one metre (one yard) from the kerb or any obstructions



The pull-push steering method is generally accepted as the best way to maintain steering control in normal driving.

# ? Driving quiz Steering

1 When steering you should concentrate on parked cars to avoid hitting them.

TRUE  FALSE

2 In order to steer correctly you need to scan the road, looking all around and into the distance. As a minimum, how far should you look into the distance when travelling at 30 mph (tick one answer):

- 30 metres (100 feet)?
- 50 metres (165 feet)?
- 75 metres (245 feet)?

3 What is the safety line (tick one answer):

- a white line used to separate traffic?
- the stopping place at traffic lights?
- an imaginary line projected ahead for safe steering?
- the rope used to secure loads on your roof rack?

## Progress check



I can steer the car safely with help from my instructor.

Signed ..... Date .....

I can steer the car safely without help from my instructor.

Signed ..... Date .....